

# milestones



Dean Laurie Glimcher, Overseers Sandra and Edward Meyer, Dr. Lewis Cantley and Anthony Meyer

PHOTO: ROGER TULLY

## Introducing the New Meyer Cancer Center

A \$75 million gift from longtime philanthropists Sandra and Edward Meyer and the Sandra and Edward Meyer Foundation will expand and enhance Weill Cornell's distinguished cancer research and care programs.

This landmark gift names the Sandra and Edward Meyer Cancer Center at Weill Cornell Medical College, led by preeminent cancer researcher Dr. Lewis Cantley, which is dedicated to using precision medicine and other cutting-edge biomedical approaches to spur and then translate research breakthroughs into the most advanced therapies for patients. In honor of the Meyer family's generous gift, Weill Cornell will also name its flagship building on 1300 York Avenue as the Sandra and Edward Meyer Research and Education Building.

"We are deeply grateful to Sandra and Edward Meyer for their transformative gift, which will enable Weill Cornell to expand its world-class enterprise in cancer research and clinical care,"

says Laurie H. Glimcher, M.D., the Stephen and Suzanne Weiss Dean of Weill Cornell Medical College. "Cancer is a disease that touches everyone's lives, and with Ed and Sandy's generous support, we will be able to rapidly accelerate our pursuit of groundbreaking treatments and therapies for our patients."

The Meyer Cancer Center champions a dramatic shift in the paradigm for translational biomedical research and clinical care. It will engage basic scientists, pathologists, bioinformaticians, surgeons, radiation oncologists and radiologists who will collaborate daily to move these discoveries from the bench to clinical trials and ultimately into therapies for patients.

**"We can think of no better investment that will make as big a difference in the world, and we know that together we can do great things for cancer patients and their families."**

Overseer Edward Meyer

The Meyer Center will also unify cancer research activities throughout Weill Cornell and enhance three core areas critical to precision medicine: a centralized biobank, cancer genomics and

computational biology. In addition, the Meyer family's gift will enable Weill Cornell to continue its efforts in recruiting the world's best and brightest minds in cancer research and clinical care, while also providing seed money to realize innovative research projects.

"The Meyer family's generosity will enable us to realize our goal of developing cancer treatments

that capitalize on precision medicine, offering targeted, individualized care based on each patient's tumor," says Lewis Cantley, Ph.D., the Meyer Director

*Continued on page 2*



# From Our Dean



We are now poised to be an even stronger leader in world-class research, medical education and clinical care.

What an incredible way to start the new year at Weill Cornell! With the opening of the Belfer Research Building and the establishment of the Meyer Cancer Center, we have a lot to celebrate here at the Medical College. Each of these events is momentous in its own right, and has infused our campus with energy and excitement. As we launch into this promising future of science and precision medicine, we are now poised to be an even stronger leader in world-class research, medical education and clinical care.

And, there is more to come. The *Driving Discoveries, Changing Lives* Campaign continues to propel us forward with its compelling mission: to accelerate our discoveries, recruit more top-tier faculty and fine-tune our academic curriculum. All of this, with the critical goal to deliver the finest care possible to our patients.

As we begin this new year, I'd like to take a moment to pause and again thank those of you, and there are so many, who have helped us with all that we have accomplished, and continue to accomplish, at Weill Cornell. It is because of the ongoing passion, commitment and dedication of our leadership, our donors and our friends that we are pioneering this new era in medicine.

Laurie H. Glimcher, M.D.  
Stephen and Suzanne Weiss Dean  
Provost for Medical Affairs

## Introducing The New Meyer Cancer Center *continued*

of the Meyer Cancer Center, the Margaret and Herman Sokol Professor in Oncology Research and Professor of Cancer Biology in Medicine. "This gift will make it possible for us to be at the forefront of cancer research, to purchase the necessary technology and recruit the very best talent to carry out this vital work."

While this is the Meyer family's first gift to Weill Cornell Medical College, in 2012 Edward Meyer, former Chairman, President and CEO of Grey Global Group and current Chairman of Ocean Road Advisors, Inc., funded the Edward H. Meyer Professorship of Economics at his alma mater, Cornell University. Through their family foundation, established in 1966, the Meyer family has an enduring dedication to philanthropy and has championed medical research and clinical care, arts and education, Jewish organizations and federated giving programs.

"Sandy, our children Meg and Tony and I gave careful consideration to which New York institution was best poised to produce breakthroughs in cancer, and Weill Cornell was the obvious choice due to its exceptional roster of translational, cutting-edge scientists and commitment to building its oncology research enterprise," says Overseer Edward Meyer. "Our daughter's experience working with Dr. Cantley many years ago solidified our



**Anthony Meyer, Overseers Sandra and Edward Meyer, Dean Laurie Glimcher and Dr. Cantley demonstrate that the Meyer Cancer Center will focus on discovering and enhancing targeted treatments for the disease.**

lifelong respect for him, and we are thrilled and humbled to have him lead the Meyer Cancer Center. We can think of no better investment that will make as big a difference in the world, and we know that together we can do great things for cancer patients and their families."







## Designer Michael Kors Supports Immunology

With his recent \$3 million gift, fashion designer and public figure Michael Kors has established the **Michael Kors Professorship in Immunology**.

Made in honor of Charles Steinberg, M.D. '64, the Howard and Carol Holtzmann Professor in Clinical Medicine, this gift will support a preeminent immunologist who will lead Weill Cornell research into the molecular underpinnings of autoimmune diseases, cancer and other immunological disorders.

"I am extremely honored by Michael's gift in support of immunology research at Weill Cornell," Dr. Steinberg says. "This gift is a true affirmation of doctor-patient relationships that transcend the provision of medicine alone, and is something I greatly appreciate."

Mr. Kors, who is most well-known for his luxury American sportswear and his role as a judge on Bravo's Project Runway, has been dedicated to philanthropy in recent years. He and his company have committed to support causes including the American Foundation for AIDS Research and the United Nations World Food Programme. He has also recently given \$5 million to God's Love We Deliver, a charity organization that was started to provide meals to those afflicted with HIV/AIDS and has since expanded to include those with cancer and other serious illnesses.

"I feel so fortunate to be able to make this donation to Weill Cornell to establish the Michael Kors Professorship in Immunology," says Mr. Kors. "It's in honor of my longtime friend Dr. Charles Steinberg and the great work he's done. By establishing this program, we hope to help the medical college's study of immunology and allow it to further its focus on discovering new treatments."

"This gift is a true affirmation of doctor-patient relationships that transcend the provision of medicine alone..."

Charles Steinberg, M.D. '64

## Technology Entrepreneur and Philanthropist

## Sean Parker Creates an Institute for the Voice

Tech entrepreneur and philanthropist Sean Parker, known for being the co-founder of file sharing site Napster and the first president of Facebook, has focused his energies on a new field: the human voice.

Mr. Parker's \$6 million donation will establish the **Sean Parker Institute for the Voice**, as well as the new **Sean Parker Professorship in Laryngology**.

The Institute – to be led by Lucian Sulica, M.D., Associate Professor of Otolaryngology and the Director of Voice Disorders/Laryngology in the Weill Cornell Department of Otolaryngology-Head and Neck Surgery since 2006 – will employ physician-scientists who will conduct research and train colleagues to understand the mechanisms of the human voice. Often, voice disorders are overlooked and mistakenly thought to be temporary conditions like laryngitis or reflux. This institute will ensure that those suffering from disorders of the voice – one of our most essential avenues for communication – receive the top care they need.

Dr. Sulica will also be the first to hold the Sean Parker Professorship. Dr. Sulica is a leading researcher, clinician and educator in the field of laryngology and voice disorders, including neurolaryngology, vocal cord paralysis and vocal cord healing.

"In an information-based economy like ours, communication is currency, and a voice disorder can represent a significant impairment. In many cases, it's not an exaggeration to call it a handicap," Dr. Sulica says. "Mr. Parker has had the tremendous insight to realize the importance of voice, and his gift allows us to approach disorders in this area with much more sophistication and on a larger scale. With his help, we're starting a bold new research effort and expanding our excellent clinical care."

In addition to this gift, Mr. Parker intends to stay engaged and help find additional resources for the Institute, allowing for the recruitment of a voice disorders researcher who will focus on developing innovative means of repairing vocal fold scarring, an unsolved problem in laryngology.

The new institute will work closely with the Center for the Performing Artist at NewYork-Presbyterian/Weill Cornell Medical Center, which caters to the needs of entertainers.

"We are grateful for Sean Parker's generosity, which will speed the development of effective therapies and treatments to the estimated 20-23 million people who experience voice disorders in the United States," says Dean Glimcher. "Mr. Parker's dedication to advancing the translation of laryngology research into care is clearly demonstrated through this remarkable gift, which will enhance Weill Cornell's investigation and treatment of patients in this area."



PHOTO: BEN BAKER

Sean Parker



# The Belfer Research Building

## A New Era of Medicine at Weill Cornell

Weill Cornell opened the Belfer Research Building, a state-of-the-art facility that ushers in a new era at the institution for cutting-edge, translational science across disciplines, on Friday, January 31st. The 18-story, \$650 million building, named in honor of Overseer Robert and Renée Belfer's \$100 million gift, was made possible through the commitment and dedication of Weill Cornell's leadership, numerous friends and donors. The 480,000 square-foot building, located at 69th Street and York Avenue, nearly doubles the Medical College's existing research space and empowers scientists to turn groundbreaking discoveries into the most advanced patient care. It will house bench-to-bedside research targeting some of the most formidable health challenges of the 21st century, including cancer, cardiovascular disease, metabolic diseases, neurodegenerative diseases, children's health, global health and infectious diseases.

After four years of construction and anticipation, this historic moment was marked with a ceremonial ribbon-cutting celebration that took place in the building's new Starr-Greenberg Conference Center. Over 400 guests attended the festivities, including members of Weill Cornell's Board of Overseers and the Cornell University Board of Trustees, as well as senior leadership of the Medical College and NewYork-Presbyterian, Executive and General Faculty Council members, CUNY leadership, political leaders and friends who have supported this transformative project since its inception seven years ago.



PHOTO: RICHARD LOBEL

Board Chairman Sanford I. Weill

**“This building is a testament to the power of public-private partnerships.”**

Board Chairman Sanford I. Weill

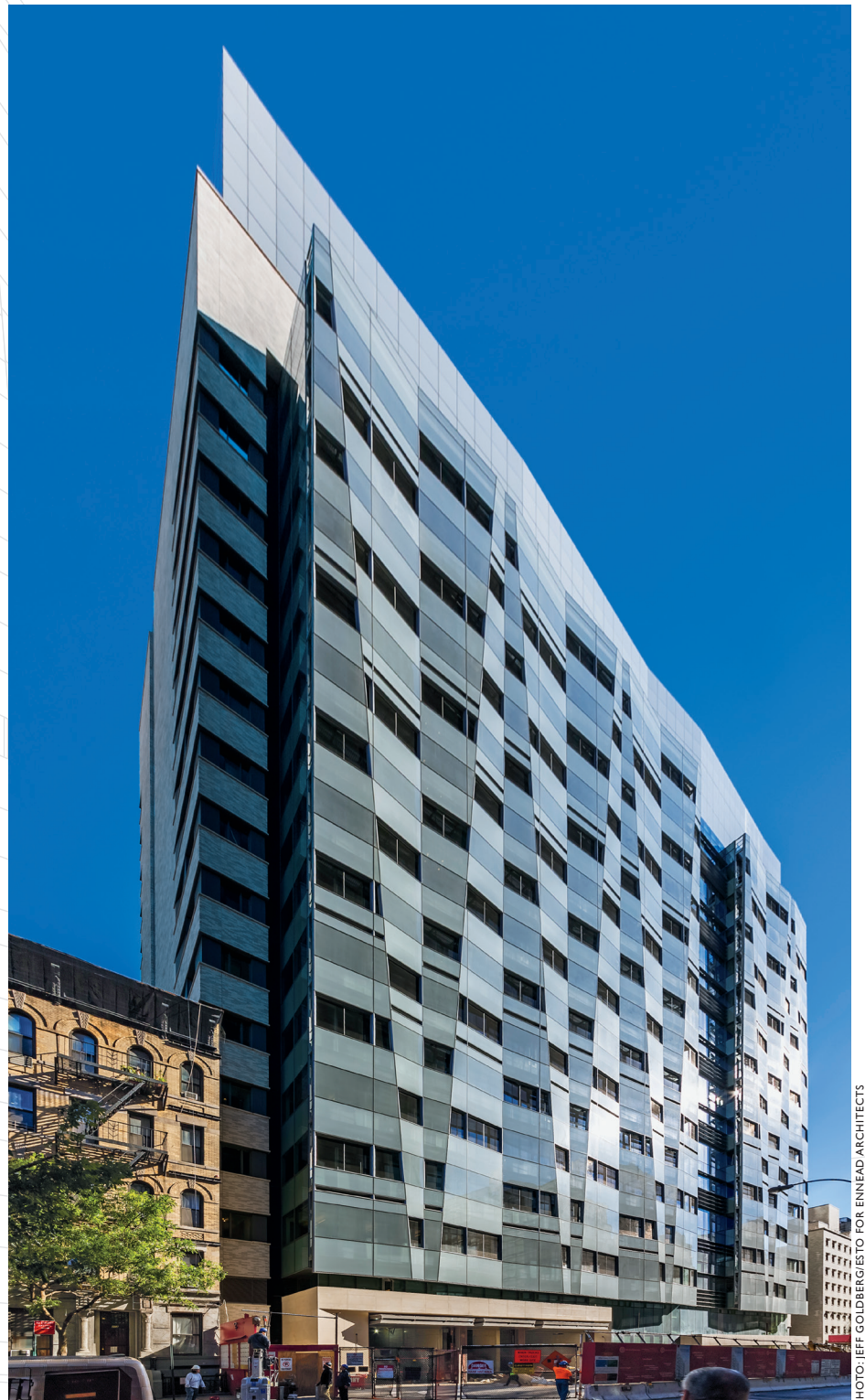


PHOTO: JEFF GOLDBERG/ESTO FOR ENNEAD ARCHITECTS

The Belfer Research Building on East 69th Street







PHOTO: RICHARD LOBELL

Overseer Robert Belfer receives a standing ovation at the ribbon cutting celebration.

“Our new Belfer Research Building is an inspiring symbol of scientific breakthroughs that can advance patient care, enhance health and change lives. I am deeply appreciative of our loyal donors and friends, distinguished physicians and scientists, and our esteemed government and civic leaders, whose unwavering dedication and support is a testament to this building’s promise.”

Dean Glimcher



PHOTO: RICHARD LOBELL

United States Senator for New York Charles E. Schumer



PHOTO: RICHARD LOBELL

(L to R) Cornell University President David J. Skorton, Chairman of Cornell University Board of Trustees Robert S. Harrison, Assistant Professor of Medicine Randy Longman, M.D., Ph.D., Overseer Robert Belfer, Dean Laurie Glimcher, Board Chairman Sanford I. Weill, Renée Belfer, United States Senator for New York Charles E. Schumer and CEO of NewYork-Presbyterian Steven J. Corwin, M.D.



PHOTO: JANET CHARLES

(First row, L to R) Vice Chair Overseer Bob Appel, Anita Gotto, Board Co-Chair Antonio M. Gotto, M.D., Director of the Appel Alzheimer's Institute Gregory A. Petsko, Ph.D., and Joan Weill (Second row, L to R) Time Capsule Committee Chair Helen Appel, Overseer Edward Meyer



PHOTO: RICHARD LOBELL

Helen Appel and Renée Belfer



# Q&A

## WHAT INSPIRES GIVING? MEET BOB APPEL

Vice Chair Overseer Bob Appel, President of Appel Associates, has charisma and unmistakable charm. And, behind his smile, is an acutely analytical mind. As Chair of the historic \$1.3 billion *Discoveries that Make a Difference* Campaign and now Co-Chair of the *Driving Discoveries, Changing Lives* Campaign, Bob has been a champion for Weill Cornell. In the ten years that he and his wife, Helen, have been part of the Weill Cornell family, they have made an immeasurable impact. Along with the Appels' ongoing generosity and commitment to advancing science, Bob has given his time, his boundless energy, and his heart toward creating a world-class institution. With two \$15 million gifts, the Appels created a legacy of advancing neuroscience initiatives at the Medical College, establishing the Helen and Robert Appel Institute for Alzheimer's Disease Research and supporting neuroscience efforts in the new Belfer Research Building. They also established the *Helen and Robert Appel Clinical Scholar Award*.

Bob recently sat down with Larry Schafer, Vice Provost for External Affairs, to speak about his role as a philanthropist and a leader for Weill Cornell.

**LS: I know that you and Helen are both devoted and active alumni of Cornell University. How did you first get involved with Weill Cornell?**

BA: When my term was over as a trustee at Cornell University, I knew that I wanted to stay connected in some way. Weill Cornell was the perfect way to stay involved while also experiencing something new. When I first became an Overseer, I don't think I truly realized how wonderful this place is! I knew Weill Cornell's reputation was good, but I was amazed by the people I met and the work that was being done here.

**LS: Through the Appel Institute, you have championed a cause that is rapidly becoming a leading health concern in our society. What drew you to support research for neurodegenerative diseases?**

BA: We had two very close friends who passed away as a result of the disease, and we were very much affected by their suffering and their untimely deaths. That's how we first got involved. It is clear that funding in this area is nowhere near what it

needs to be, so supporting these efforts is certainly a worthwhile enterprise.

**LS: In addition to your philanthropy and your role as an Overseer, you were Chair of the *Discoveries Campaign*. What was that like for you?**

BA: Well, it started out when Sandy Weill said to me, "Let's go raise a billion three." I actually thought he was kidding! Our goal was to raise money to support what is now the Belfer Research Building. At that time, I thought it would be an interesting campaign, but also an impossible one. I don't think I fully understood the power of this institution and its great desire to be involved more heavily in research. So, we took a unique approach and concentrated a lot of our efforts on areas with research needs that had not yet been met, where only research can truly make a difference.

**LS: What surprised you most about being Campaign Chairman?**

BA: I think it was how willing people were to work toward raising money and

to give during very difficult economic times. Weill Cornell has a reputation that's sterling, a leadership that's willing to act, and the people to make it work. It's a powerful combination. So, it's very easy to be Chairman of a campaign when all of that is put into place.

**LS: And you've signed on to co-lead another one for us with the new *Driving Discoveries, Changing Lives Campaign*...**

BA: Yes, I believe that there will always be a need for major funding of medical research. Medical technology and research are at a pivotal point – money that comes in now will have enormous rewards. The beautiful thing about research is that it is a very wise investment – the more money you throw at it, the greater your chance of success. And it works. When you make a gift toward research, you can really feel that you are making an impact.

**LS: So, how did you learn about giving back?**

BA: I credit a few people who taught me along the way, like Harold Tanner, who introduced it to me when he was Chairman of the Board at Cornell. But honestly, giving back is like potato chips. Once you do it, it's so good, you just do more of it.

Andrew Carnegie said, "The man who dies rich, dies disgraced." I'm a big believer in that. The beauty of giving money away while you're alive is that you get to see its impact – or at least some of its impact. Unless I'm wrong, you don't come back that often to see your impact from "up there."

**LS: You and Helen also support bastions of New York City culture, including Jazz at Lincoln Center and the New-York Historical Society. Do you have a family philosophy for philanthropy?**

BA: Our philosophy is that as long as we're capable of doing it, we'll simply find the areas that we think make the most sense and do it while we're here and alive. It's such

an important part of our life. It doesn't have to be everything, but you have to support the things you're most passionate about.

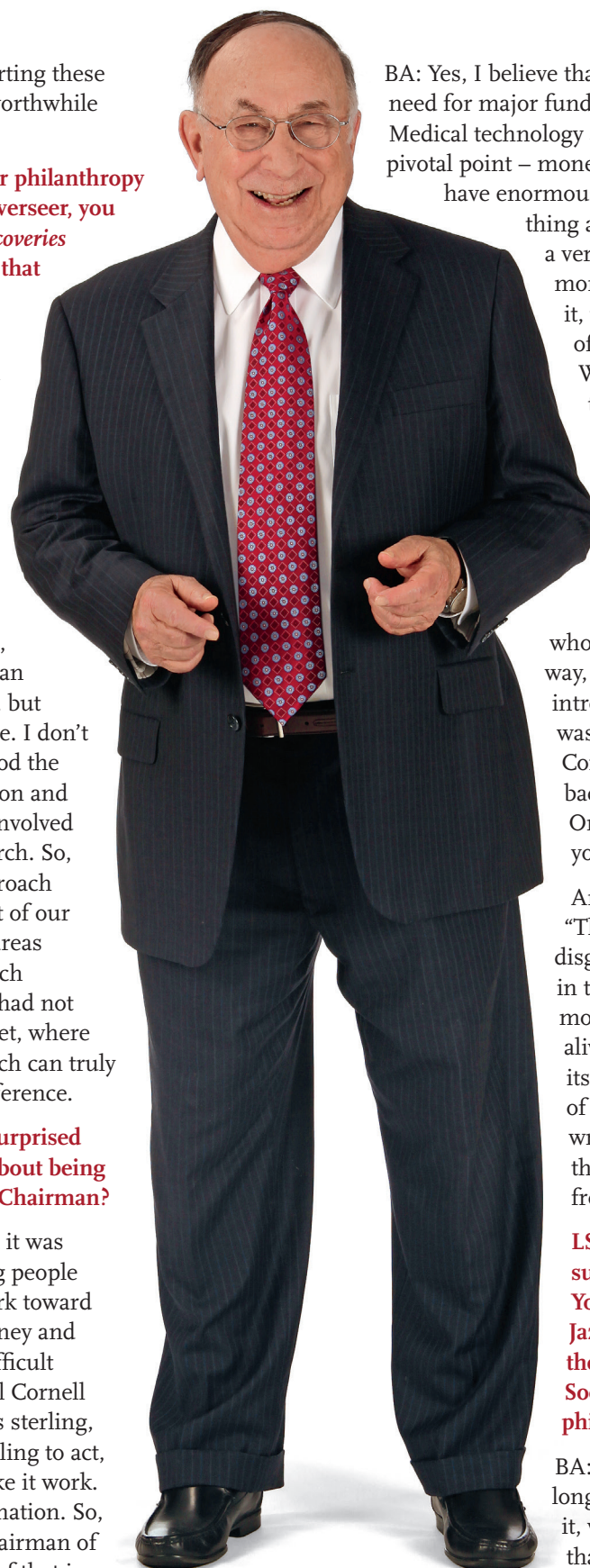


PHOTO: RICHARD LOBEL







PHOTO: JOHN ABBOTT

# Devoted Donor

## Jill Roberts Establishes IBD Research Institute with \$15 Million Gift

Inflammatory bowel disease is one of the most prevalent gastrointestinal diseases in the United States, and with a new \$15 million gift, longtime donor Jill Roberts has established the **Jill Roberts Institute for Research in Inflammatory Bowel Disease** with hopes to improve treatments for patients and, ultimately, cure the illness.

This gift will enable the recruitment of a senior scientist to direct the Institute, which will be housed in the new Belfer Research Building. The team of scientists working at the Institute will collaborate closely with the clinical team at the Jill Roberts Center for Inflammatory Bowel Disease at Weill Cornell and NewYork-Presbyterian,

established by Mrs. Roberts in 2006 and led by Ellen Scherl, M.D., Director of the Jill Roberts Center and Professor of Clinical Medicine.

“We opened the Center with the intent of finding a cure,” says Mrs. Roberts. “So opening this research institute is the next natural step.”

Mrs. Roberts is already a champion for clinical and educational efforts at the Medical College. In addition to establishing the Jill Roberts Center, her contributions have included the creation of the Henry R. Erle-Roberts Family Professorship in Medicine, held by Andrew J. Dannenberg, M.D., Professor of Medicine, and the Jill Roberts Professorship of Inflammatory Bowel Disease, made in honor of and held by Dr. Scherl.

“Jill created the Center because she felt strongly that clinical care for patients with IBD should be housed in a fully-equipped, well-staffed facility,” says Dean Glimcher. “She is passionate about supporting the treatment and research of IBD, and has demonstrated that passion by becoming an integral part of the Center.”

**“We opened the Center with the intent of finding a cure, so opening this research institute is the next natural step.”**

Jill Roberts

Mrs. Roberts spends several full days a week working at the Center, and serves as a patient advocate for everyone who walks through the door – over 10,000 patients a year. She has spent years learning the intricacies of the disease, and can speak of it with a great deal of expertise.

“Patients feel that in so many ways Jill is an anchor,” says Dr. Scherl. “If they’re unmoored, before they even get to the doctors in the practice, Jill will be there advocating for them. They like talking with Jill, and that’s a wonderful thing.”

Dr. Scherl looks forward to the collaborations that will arise between the Institute and the Center.

“What we are going to continue to do is strengthen the clinical program so that it can be the core for the translational research which will be carried out in the new institute, underscoring the mission of the medical college,” says Dr. Scherl. “This could not have happened without Jill’s commitment and vision.”

“From the beginning, Jill has understood the importance of recruiting top-notch researchers and translational scientists,” says Dean Glimcher. “With this extraordinary gesture and her prior efforts, Weill Cornell is now primed to be a leader in IBD research and patient care.”

For her part, Mrs. Roberts would like nothing more than to help bring an end to inflammatory bowel disease, and she hopes that this gift will lead to that very result.

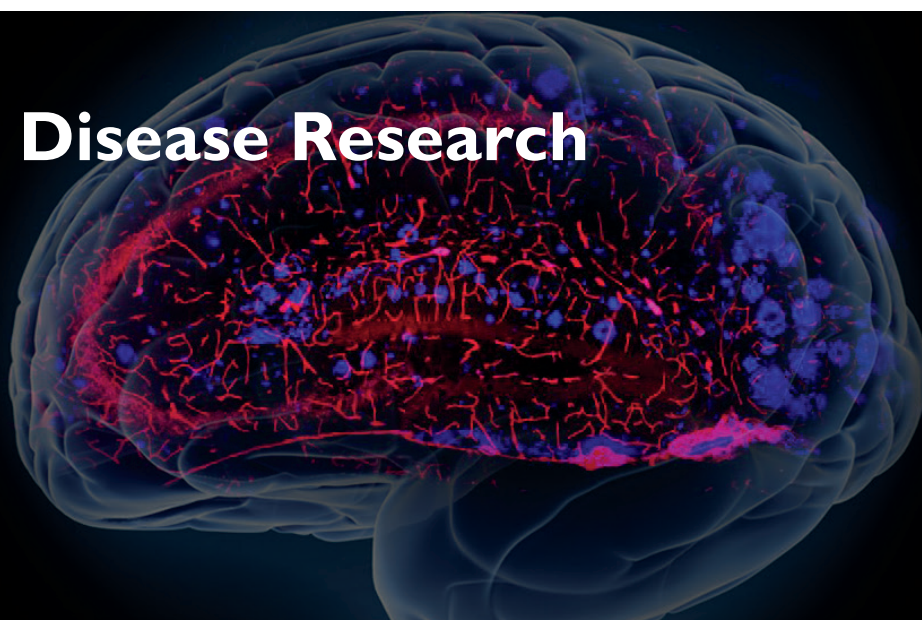
“I think this institution is poised to find a cure,” said Mrs. Roberts. “And I am proud to have helped move that along.”

## Save the Date The Appel Alzheimer’s Disease Research Institute Symposium

**April 1, 2014  
Belfer Research Building**

The Symposium will highlight groundbreaking research and discoveries by leading investigators and provide a platform for discussing the advances being made in research on Alzheimer’s disease and other related neurodegenerative disorders.

For more information or to register for this event, please contact Alexandra Hayat at (646) 317-7389 or [alh2029@med.cornell.edu](mailto:alh2029@med.cornell.edu)





## PARTNERS IN MEDICINE

The winter luncheon for Partners in Medicine, the Weill Cornell annual giving society, took place at the Griffis Faculty Club on December 4th. A room packed with attendees learned about precision medicine – the practice of personalized medicine based on an individual’s genome – and the incredible impact it can have on cancer care. Dean Glimcher hosted the event, which featured a presentation by Gail Roboz, M.D., Director of the Weill Cornell Leukemia Program and Associate Professor of Medicine.



Dean Laurie Glimcher meets a PIM member.



Dr. Gail Roboz presents on precision medicine.

SAVE THE DATE | MARCH 3, 2014

PALM BEACH SYMPOSIUM

Healthy Living: the Latest in Preventive Medicine

Weill Cornell Medical College

For more information or to register for the Palm Beach Symposium, please contact Michelle Fish at 646-317-7396 or mif2018@med.cornell.edu

## Weill Cornell Medical College BOARD OF OVERSEERS

- Sanford I. Weill

Chairman
- Antonio M. Gotto, Jr., M.D., D.Phil.

Co-Chair
- Robert J. Appel

Vice Chair
- Jeffrey J. Feil

Vice Chair
- Barbara B. Friedman

Vice Chair
- Arthur J. Mahon

Vice Chair
- 
- Laurie H. Glimcher, M.D.

Stephen and Suzanne Weiss Dean
- Gary Koretzky, M.D., Ph.D.

Dean, Graduate School of Medical Sciences
- Robert S. Harrison

Chairman, Board of Trustees, Cornell University
- David J. Skorton, M.D.

President, Cornell University
- Tarek Abdel-Meguid

Madelyn Antoncic, Ph.D.

Ajay Banga

- Ron Baron
- Robert A. Belfer
- Jessica M. Bibliowicz
- Her Highness Sheikha Moza Bint Nasser
- Lloyd C. Blankfein
- David Blumenthal, M.D. '75
- Chelsea V. Clinton
- Abby Joseph Cohen
- Alberto Cribiore
- Elizabeth Rivers Curry
- Robert Dow
- Ira Drukier
- Sanford B. Ehrenkranz
- Israel A. Englander
- Anne E. Estabrook
- Samuel C. Fleming
- Charlotte M. Ford
- Gerald J. Ford
- Harold E. Ford, Jr.
- Kenneth C. Frazier
- Paul A. Gould
- Jeffrey W. Greenberg
- Maurice R. Greenberg
- Lorraine Gudas, Ph.D.
- Leonard M. Harlan
- Lawrence A. Inra, M.D.
- Michael Jaharis
- John A. Kanas
- Harvey Kaylie
- Michael M. Kellen
- James M. Kilts
- Charles Lee
- Thomas H. Lee, M.D., '79
- Michael T. Masin
- Anna Sophia McKenney
- Peter C. Meinig
- Ronay A. Menschel
- Edward H. Meyer
- Sandra R. Meyer
- Howard P. Milstein
- Edwin H. Morgens
- Rupert Murdoch
- Spyros Niarchos
- Timothy O'Neill
- Nancy C. Paduano
- Nelson Peltz
- Ronald O. Perelman
- Stanley Prusiner, M.D.
- Bruce C. Ratner
- Philip R. Reilly, M.D., J.D.
- Burton P. Resnick
- Isadore Rosenfeld, M.D.
- Zev Rosenwaks, M.D.
- Lawrence Ruben
- Richard G. Ruben
- Lewis A. Sanders
- Herbert J. Siegel
- A.J.C. (Ian) Smith

- Daisy M. Soros
- R. Ernest Sosa, M.D. '78
- Nan Swid
- Samuel O. Thier, M.D.
- Carolyn S. Wiener

- LIFE OVERSEERS
- Raymond R. Herrmann, Jr.
- Harvey Klein, M.D.
- Margaret Osmer-McQuade
- Frank H.T. Rhodes
- Patricia Carry Stewart
- Harold Tanner
- Roger J. Weiss

- CAMPAIGN LEADERSHIP
- Robert J. Appel
- Campaign Co-Chairman
- Jeffrey J. Feil
- Campaign Co-Chairman
- Larry Schafer
- Vice Provost for External Affairs
- Lucille Ferraro
- Campaign Director
- Patricia Gutter
- Executive Director of Development

Milestones is a publication of the Office of External Affairs at Weill Cornell Medical College.  
 Larry Schafer, Vice Provost for External Affairs • Lucille Ferraro, Campaign Director • Mason Essif, Executive Director of Communications and Public Affairs  
 John Rodgers, Director of Creative and Editorial Services • Aviva Meyerowitz, Development Communications Manager • Meghan Washington, Editorial Specialist  
 If you wish to have your name removed from lists to receive fundraising requests supporting Weill Cornell Medical College in the future, please either 1) write to us at: Privacy Office, Weill Cornell Medical College, 1300 York Avenue, Box 303, New York, NY 10065; 2) call us at 866-841-2420; or 3) e-mail us at optoutwcmc@med.cornell.edu.